

ERPsim[®]

Facilitator-led

What is ERPsim?

A competitive business simulation experience to gain understanding of ERP and the business value of SAP providing real-time analytics and reports with actionable insights

An experience that demonstrates the extraordinary value that Generative AI and machine learning fed data analysis may provide for your business and to start your organization's dialogue of when and how you will leverage Artificial Intelligence

A “gamified” business scenario simulation in a live SAP S/4HANA ERP environment with a fully functional Fiori launchpad; all players are “super-users” and see all functional roles, reports and analytics to understand the impact of individual and team decisions made in the competitive scenario simulation

How it works

After you've scheduled a certified ERPsim facilitator/instructor for your simulation, collaborate with the ERPsim facilitator to determine which participants should be invited to compete in the simulation and any recommendations for participant team assignments. Decide if the simulation event should or can be done in person or virtually.

- A simulation is divided into timed rounds in which each minute represents a day. Facilitators setup the overall time for the simulation and may adjust the speed of the timed rounds.
- Overall, the facilitator guides the teams competing in the simulation and may pause the simulation as needed to provide direction, answer questions and/or to encourage behavior or actions.
- During each round, team members must collaborate using real-time SAP S/4HANA data and analytics to aid their decision making.
- After the simulation is complete, the facilitator leads a debrief session that solidifies and enhances the learning experience, turning “Aha!” moments into memorable lessons.

Features

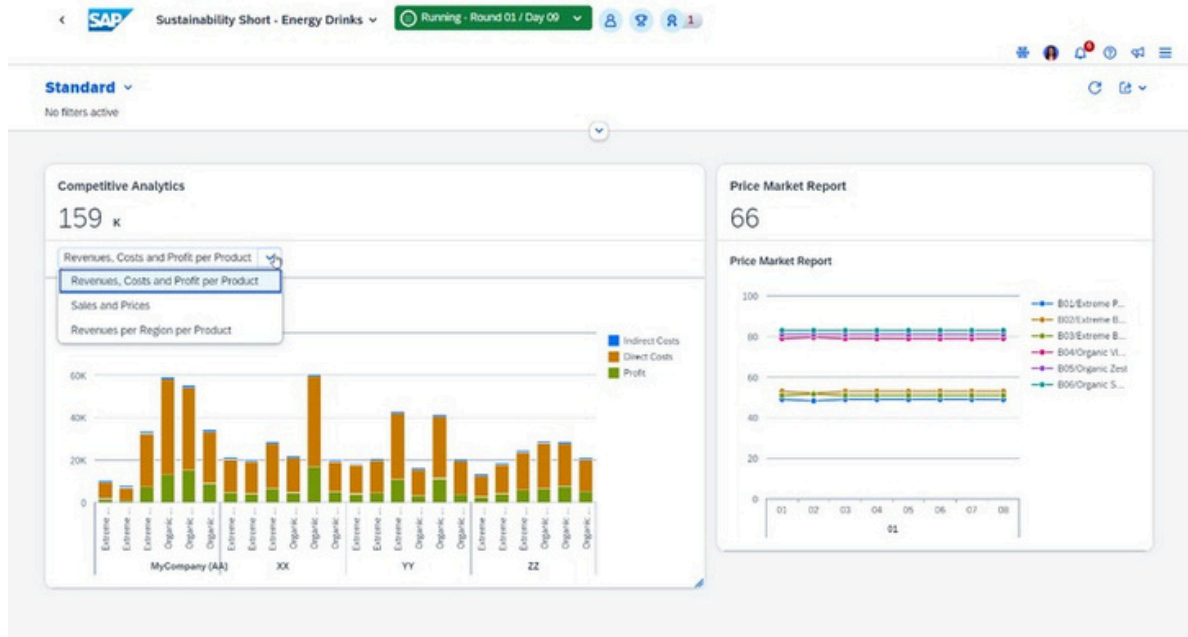
Facilitator guided realization

Each ERPsim facilitator-led simulation event concludes with facilitator debriefing participants on their decision-making, strategic thinking and behavior and the ultimate impact on the business outcomes.



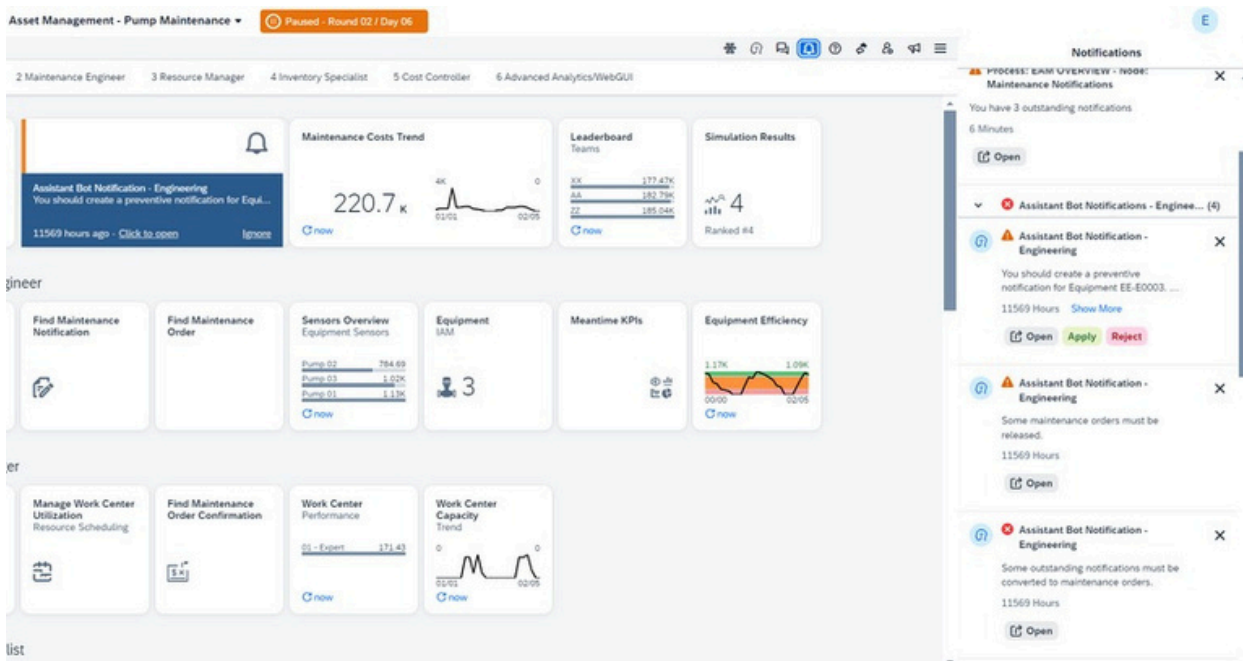
Live SAP S/4HANA with Fiori interface

Whether your goal is to familiarize participants with process integration or showcase S/4HANA, nothing beats working in a live system with powerful real-time analytics to support informed decisions.



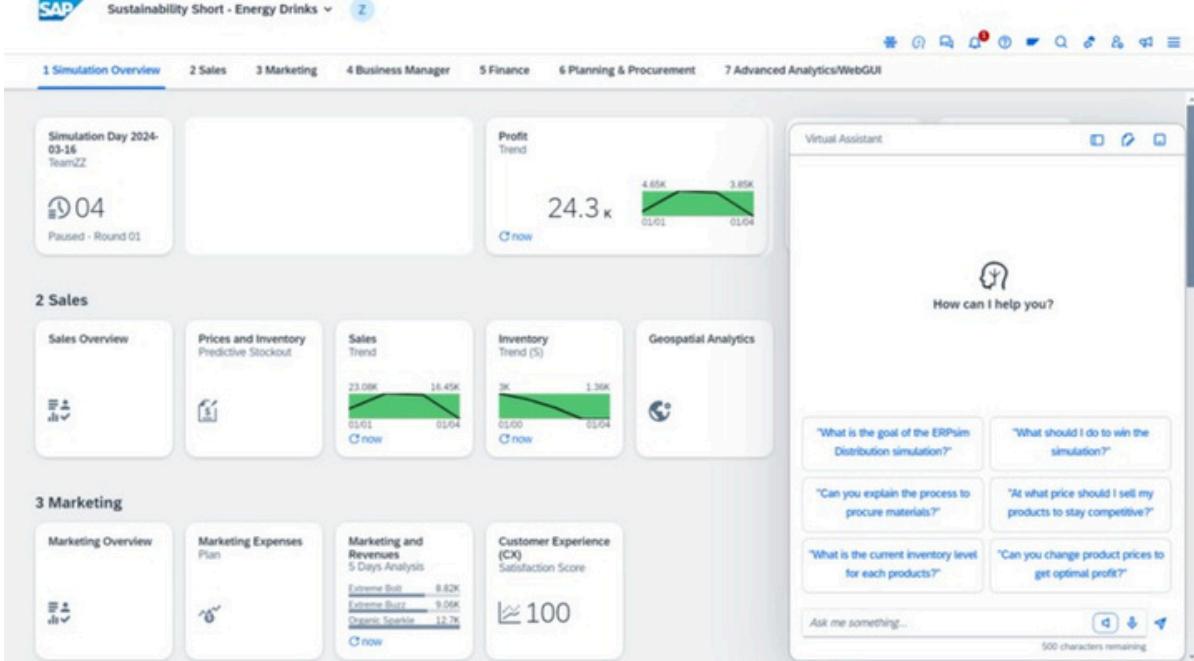
Real-world problems

Participants solve real-world business problems in a safe environment that encourages them to experiment and learn from their successes and mistakes, individually and as a team.



Generative AI and Machine Learning

Experience and experiment with the forefront of technology innovations with ERPsim's Generative AI Intelligent Digital Assistant and Machine Learning Decision Support functionality.



Multiple use cases

ERPsim is a versatile solution with diverse applications – before or after ERP implementations, upgrades, or migrations. Whatever the use case, the result is faster digital adoption.

Pre-Sales/SAP ERP Evaluation

- Interactive Demonstrations:** ERPsim’s engaging simulation allows potential clients to interact with the SAP system, offering a more dynamic and informative experience compared to traditional demos.
- Scenario-Based Engagement:** Tailor scenarios to reflect specific business challenges and demonstrate the real-world application and benefits of SAP ERP.
- Enhanced Understanding:** Facilitate a deeper comprehension of SAP ERP features and functionalities through active participation.

SAP & Technology Innovation Adoption Planning

- Exploring Machine Learning Capabilities:** Use ERPsim to demonstrate how integrating machine learning can optimize business processes, enhance predictive analytics, and improve decision-making.
- Real-Time Analytics in Action:** Showcase the power of real-time analytics in ERPsim scenarios, illustrating how instant data access can transform business strategies and outcomes.
- Strategic Planning with Advanced Technologies:** Leverage ERPsim to plan and evaluate the adoption of these technologies, understanding their impact on various business operations and gaining insights into effective implementation strategies.

Training, Team Building, Influencing Stakeholders

- Hands-On Training:** Utilize ERPsim for immersive learning experiences, enhancing SAP skills and knowledge.
- Team Building:** Foster collaboration and communication among team members through shared ERPsim sessions.
- Stakeholder Engagement:** Use simulation results to influence and inform stakeholders about the value and impact of SAP ERP in organizational contexts.

Available Scenarios



Gameplay

ERPsim Facilitator-Led Event

Group play
10+ human players organized into 3+ human teams compete against another, with an option to also compete against a machine learning bot team. Facilitator-led simulations may be played with groups of up to 234 players in 26 competing teams.

Facilitator schedule
The facilitator schedules the simulation session event – virtually, in-person or hybrid – and sets up the teams.

Facilitator guided play The ERPsim Facilitator guides players through the experience and conducts an end game debriefing, leading a discussion of take-aways from the experience and more importantly, dialogue of what’s next for the business or organization to evolve in their own ERP journey.

ERPsim Use

65 countries
4,000+ ERPsim events
80,000+ participants

